

# How to set up InkOwl ICC profile for SG400/SG800 using ICM on Windows (for all programs)

ICM mode is a special method of installing an ICC profile directly within the Windows operating system. This allows you to use ICC profiles even on programs that don't offer color management options, such as: Cricut Design Space, Silhouette Studio, GIMP, and many more!

## Step 1: Download and move the profile

1. Download the profile you need either from our website or from an email we sent you.
2. Once downloaded, you will need to move the file to the system folder on your computer where all of your profiles are stored. The location will depend on what version of Windows you are running. Refer to the list below:

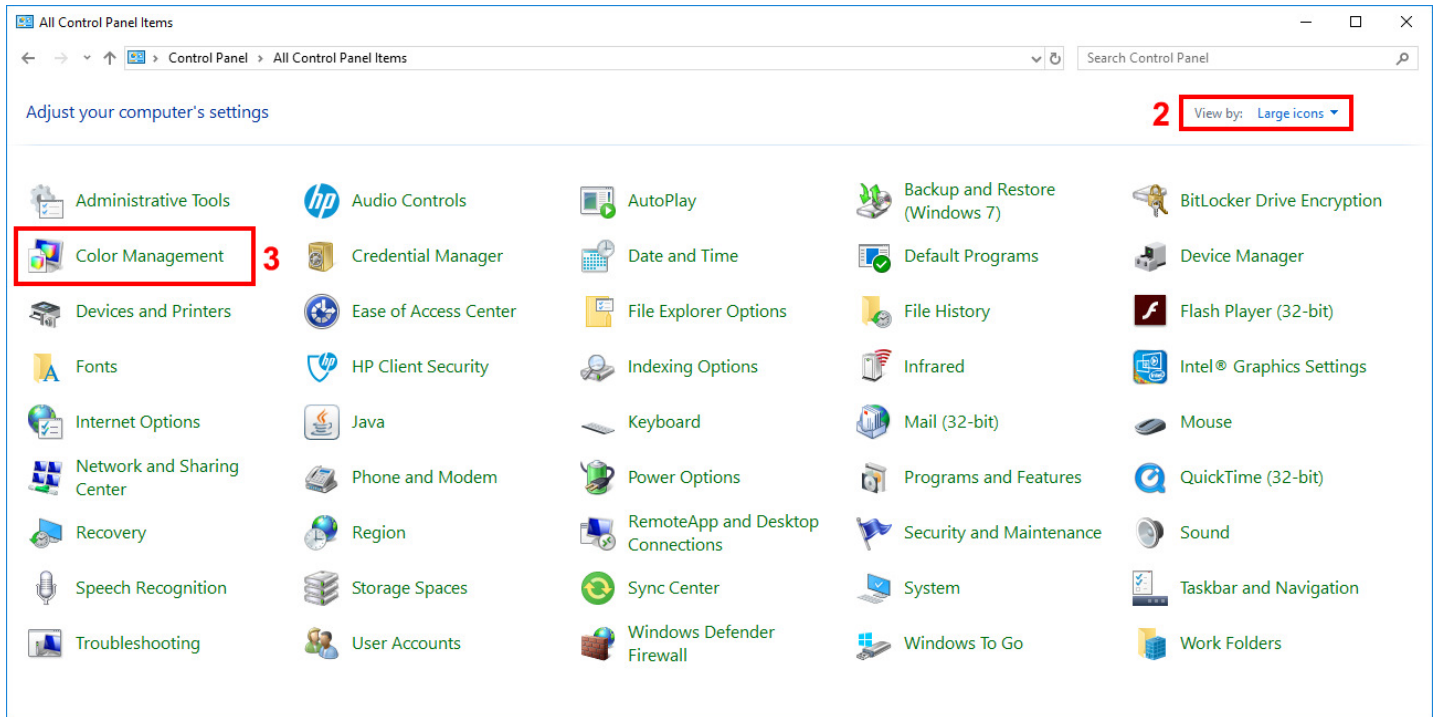
### **Windows 98/ME**

C:\Windows\System\Color\

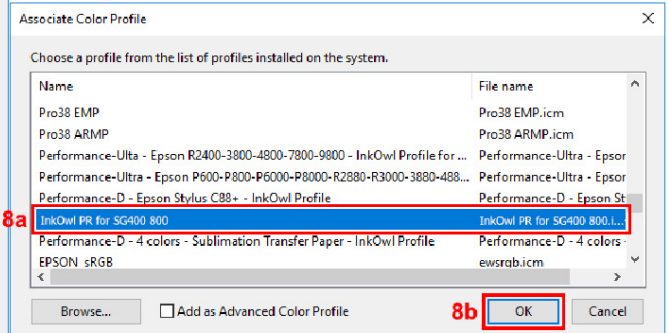
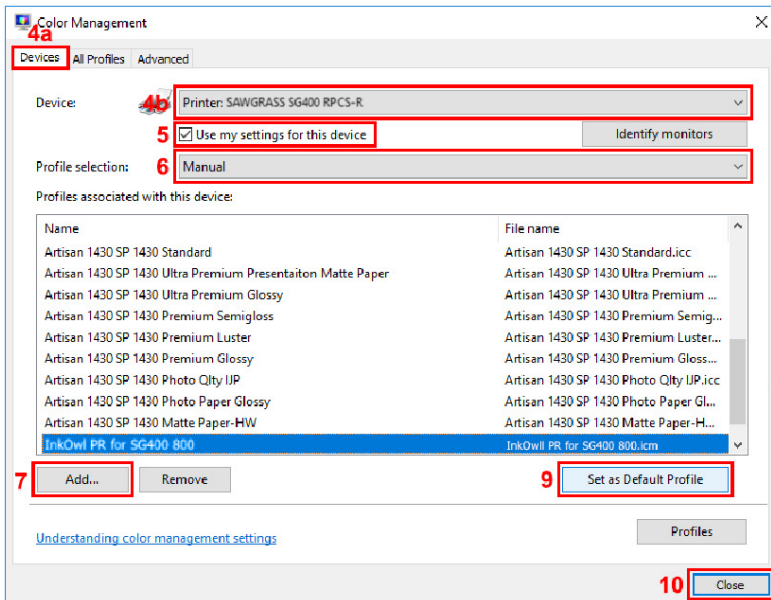
### **Windows XP/Vista/7/8/10**

C:\Windows\System32\Spool\Drivers\Color\

## Step 2: Set up the profile



1. Open the Control Panel.
2. Set *View by:* to *Large icons* (if it isn't already set that way) so that the Control Panel looks like the image above.
3. Click on *Color Management*.



4. Under the *Devices* tab, for *Device*, select the Sawgrass **SG400 RPCS-R** or **SG800 RPCS-R** printer from the dropdown menu.
5. Check the box labeled *Use my settings for this device*.
6. For *Profile selection*, choose *Manual*.
7. Click on *Add...*
8. Click on the profile you just downloaded and the click *OK*.
9. Select the added profile then click on *Set as Default Profile*.
10. Click *Close*.

### Step 3: Printing with ICM mode

Click the Print option in your image editing program. Select the Sawgrass **SG400 RPCS-R** or **SG800 RPCS-R** printer as your printer and then follow the needed steps (will vary depending on the image editing program being used) to access your Printer Preferences (see image below).

Once in the Printing Preferences menu, follow the steps below to ensure you are printing with the optimal print settings for our profile.

1. In the *Paper Type* dropdown menu, select the option *Postcard*.
2. In the *Select Print Quality* dropdown menu, select the option *High Quality*.
3. Click on the *Detailed Settings* tab.
4. In the *Menu:* list of options, select the option *Print Quality*.
5. In the *Color Profile:* dropdown menu, select the option *Use ICM*.
6. In the *Gray Reproduction:* dropdown menu, select the option *CMYK for Image*.
7. Go back to the original screen by clicking on *One Click Presets*.
8. Click on *Register Current Settings...* so that you can save these settings as a preset for your convenience later.
9. Press *OK* to apply these settings.

Press print! The profile will be applied to your design as it is sent out to the printer. Don't forget to mirror your images if required!

