



# HP REFILL INSTRUCTIONS

## CARTRIDGES:

**HP 970/971** (CN621AM/CN622AM/CN623AM/CN624AM),  
**HP 970XL/971XL** (CN625AM/CN626AM/CN627AM/CN628AM),  
**HP 980** (D8J07A/D8J08A/D8J09A/D8J10A)



Save up to 90% on printing supplies.

## Required Materials: Paper Towels, Syringe and Needle, Hot Melt Glue Gun, Hammer, Nail or similar thin and blunt object

NOTE: Do not wait for the cartridge to become completely empty before refilling. See the [Ink Levels](#) note below for more information.

- 1) Work over paper towels in an area where you can tolerate a spill.
- 2) Verify the type of cartridge that you have confirm which filling holes you will need to open. *Setup/Startup cartridges come with the printer when originally bought. Regular and XL cartridges are bought separately.* See the table to the right for details. See image 1 for the filling hole locations.
- 3) To open the seal (or seals), position a nail, screwdriver, or any other appropriate object over the ball seal and strike it very gently with a hammer. See image 2. The ball seal will fall into the cartridge. Once the filling holes are open, be careful to always keep the cartridge with the open holes facing upwards to avoid a spill. See image 3 for the final result (nothing sealing the fill hole or fill holes).
- 4) Use the syringe and needle to inject ink into the cartridge.

Cartridge Model	Filling Holes	Est. Capacity
970 Setup	Both holes	140ml
970 Regular	<b>Hole #1 only</b> (do not open hole #2)	50ml
970XL	Both holes	250ml
971 Setup + XL	Both holes	110ml
971 Regular	<b>Hole #1 only</b> (do not open hole #2)	40ml
980 Black Startup	Both holes	140ml
980 Black Regular	Both holes	250ml
980 Color	Both holes	110ml

Cartridges with hole #1 only: Inject ink until you visibly see that the ink has reached the brim of the hole. Then, immediately withdraw 3ml of ink.

Cartridges with both holes: Inject ink into hole #2 until you visibly see that the ink has reached the brim of the hole. Then, immediately withdraw 3ml of ink. Then, repeat with hole #1.

Approximate ink cartridge capacities are provided in the table to the right. However, the actual amount ink you can fill may end up being quite different, especially for Setup/Startup. Therefore, to avoid spills, it is a good idea to always fill slowly and attentively, stopping and withdrawing 3ml the moment the ink reaches the brim. Do feel free to exceed the specified volumes if the cartridge is not yet full.

- 5) Wipe the area around the filling hole (or holes) with a paper towel.
- 6) Use a hot melt glue gun to seal the hole (or holes). The use of hot melt glue is essential to ensure an airtight seal. If the seal is not airtight, the cartridge will leak. See image 4 for the final result.
- 7) Once the glue has dried, make sure the cartridge does not leak. The cartridge can then be installed.

NOTE: For subsequent refills, simply pry away the glue using a miniature screwdriver or other appropriate tool and fill the cartridges normally as per steps 4 to 7.

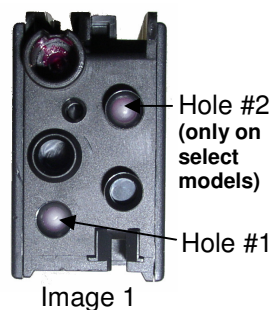


Image 1

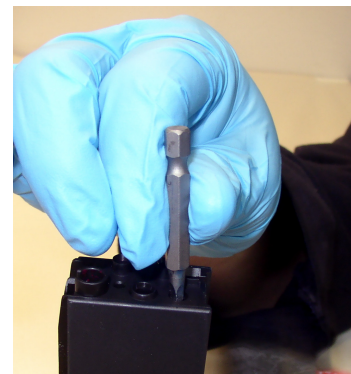


Image 2



Image 3



Image 4

### WARNING REGARDING INK LEVELS

The printer will continue to say that the cartridge is low or empty, but should print regardless.

However, **if a cartridge ever becomes physically completely empty**, the printer will **refuse** to print until that cartridge has been replaced. If this does happen, you will have no choice but to install a different cartridge. The other cartridge you install can be a brand new HP cartridge, a different refilled cartridge, or a different totally empty cartridge; it does not matter. However, you will only be able to reuse your first cartridge after your second cartridge has been installed and accepted.

Therefore, there are two ways to proceed:

- If you have more than one set of cartridges at your disposal, you can safely print until empty without ever checking the cartridges. The printer will stop once a cartridge becomes empty. You can then refill the cartridge and use your second cartridge to get the printer to accept the first.
- On the other hand, if you only own one set of cartridges and do not plan on acquiring a second set, you must check the cartridges regularly so that they never become fully physically empty. The easiest way to do this is to take the cartridges out and shake them to feel/hear the ink splashing inside. You must refill the cartridges before they become totally empty.

You may occasionally receive error messages on your computer that a non-original or refilled cartridge is installed. These messages can be safely ignored.